

BAE JIO



Life can be overwhelming at times—not just when our jobs or obligations take up too much of our time, or when relationships drain us, or money troubles keep us up at night. Those things happen, sure. But life, just being as it is, can sometimes slap us in the face for no reason. “Hello!” it says. “You’re human! This is your experience! Can you believe it? Wow!”

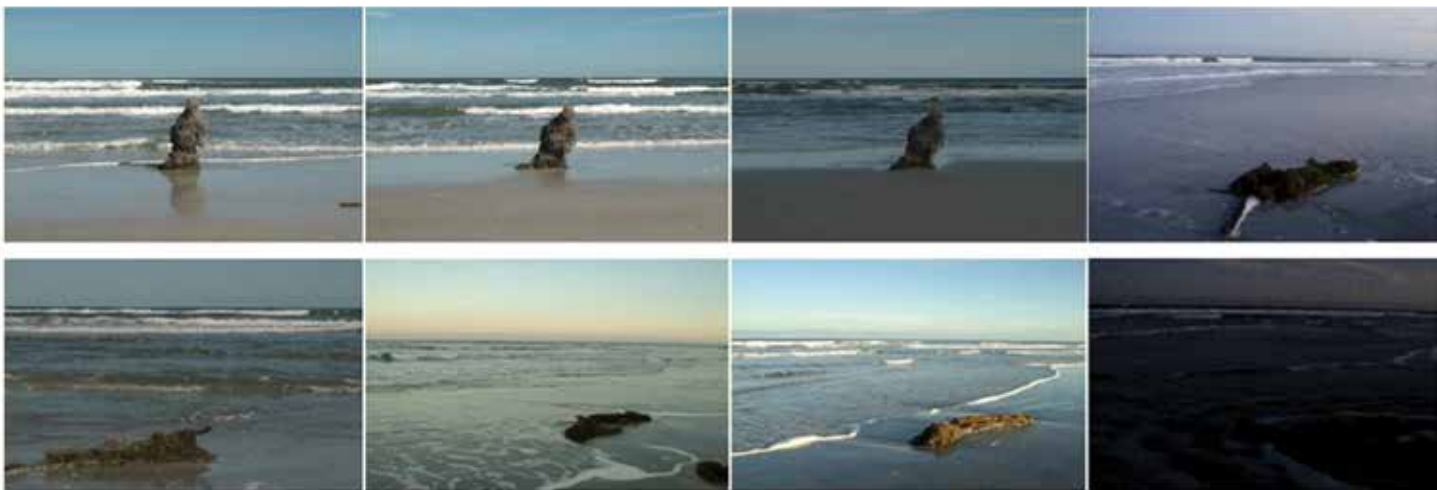
Depending on the day, that sentiment can either make us smile and laugh until it hurts, or it can move us to tears. If the idea of life often evokes these two extremes of the emotional spectrum from us, we might search for an outlet to help us reign it all back in.

In this instance, this outlet is facilitated by the click of a button. Artist Bae Jio employs photography to

assist her in dealing with feelings brought on by her own life experiences. Originally from Japan, she is a self-proclaimed nomad who travels any chance she gets. Her adventures aren’t restricted to the material world; the artist says that even in her dreams she enjoys wandering around unknown places, often waking up in her Daegu apartment feeling strangely displaced.

Bae’s photographs reflect her life’s nomadic theme and are an expression of her identity. “I recognize that this is a fickle and vulnerable premise,” she says. “However, I also underscore my sentiments with rational structures. I have chosen to use machines or electronic media [in my work] so that their inherent coldness might keep my raw emotion in check.” Her photographs are balanced by the incorporation







of elements from nature. She believes our search for identity is just as universally understood and essential to life as the natural elements.

It seems that Bae wants to feel a connection to you, and you to her, through her photographs. She believes that everyone shares the same emotions, so the feelings that she is expressing through her work could very easily belong to any of us. “I bring to my work essential elements such as who I am, where I am going, what I am trying to find—aspects that every person shares,” Bae says. While the nomadic life that she has chosen can often be one of solitude, it is clear

that she longs to feel connected and understood.

“Every human is born with a tendency towards nomadism,” says Bae. The creation of her art is an exercise in self-searching and expression, but she hopes that viewers feel a stirring of their own nomadic potential when viewing her work, while simultaneously experiencing an emotional connectedness to others. **[b]**

Lisa Highfill